

Lower Colorado River Multi-Species Conservation Program



Balancing Resource Use and Conservation

Habitat Use and Movements of Juvenile Flannelmouth Sucker Below Davis Dam using Radio and Sonic Telemetry

Eric Best (USBR, Denver)
Jeff Lantow (USBR, Boulder City)



Lower Colorado River Multi-Species Conservation Program



Balancing Resource Use and Conservation

Background

- Not historically common
- 611 fish stocked in 1976 (AZGFD)
- Established self-sustaining population ~2400 adults



Lower Colorado River Multi-Species Conservation Program



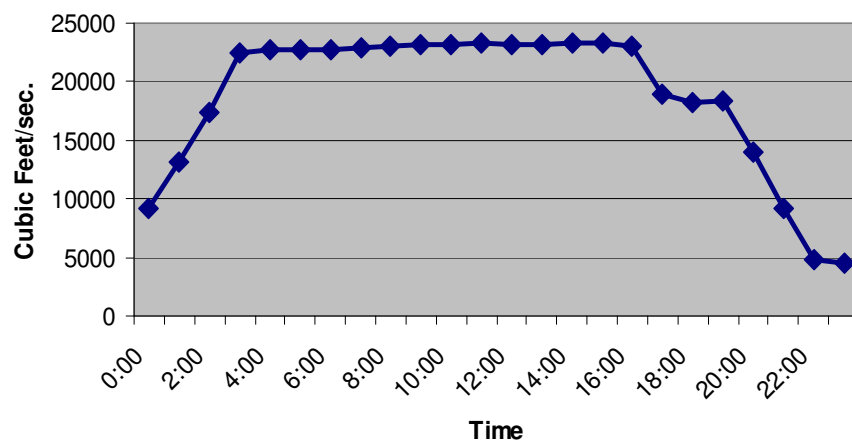
Balancing Resource Use and Conservation

Study Area

- Davis Dam to Lake Havasu
- Upper half = Reinforced shorelines and Rocky substrates
- Lower half = Canyon walls, large backwaters, sandy substrates



Hourly Discharge Below Davis Dam, April 20th, 2007



Lower Colorado River Multi-Species Conservation Program



Balancing Resource Use and Conservation

Juvenile/Subadult FMS

- Target juv/subadults from LM inflow
- Implanted with tags at LM Hatchery and allowed to recover
- 30 sonic and 8 radio tags.



Lower Colorado River Multi-Species Conservation Program



Balancing Resource Use and Conservation

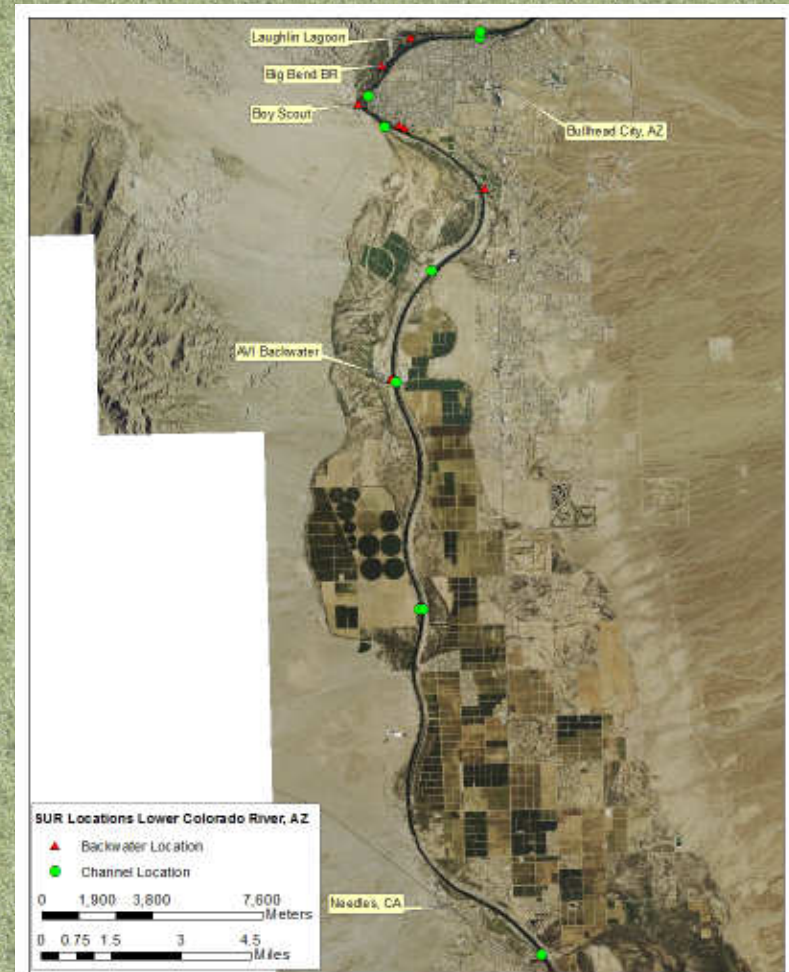


Lower Colorado River Multi-Species Conservation Program



Balancing Resource Use and Conservation

SUR Locations



Lower Colorado River Multi-Species Conservation Program



Balancing Resource Use and Conservation



Lower Colorado River Multi-Species Conservation Program



Balancing Resource Use and Conservation



Lower Colorado River Multi-Species Conservation Program



Results

Balancing Resource Use and Conservation

- Lost – 2 radio/12 sonic
- Morts.- 1 radio/5 sonic
- Good data – 5 radio/13 sonic

Fish selected bull rush stands in channel and backwaters during the day in less turbid environments

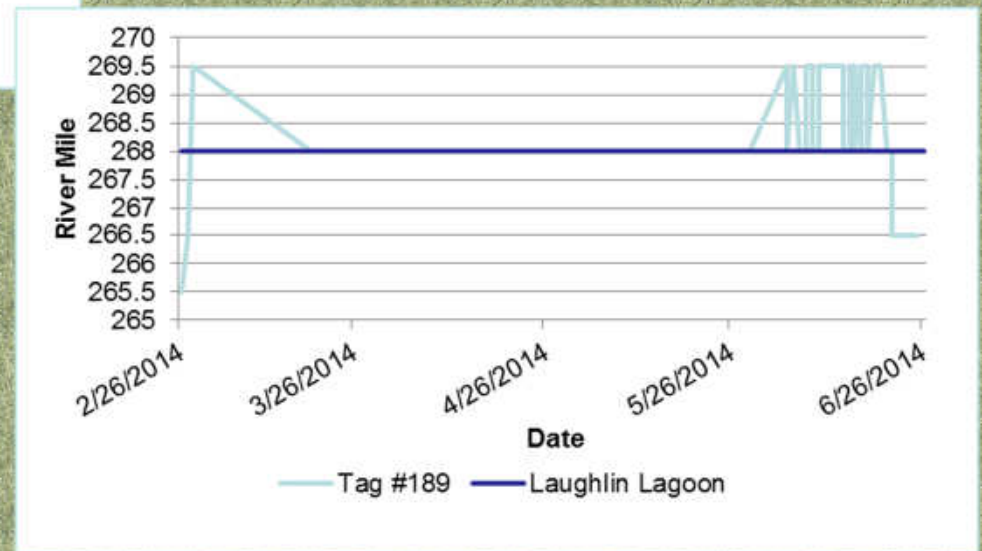
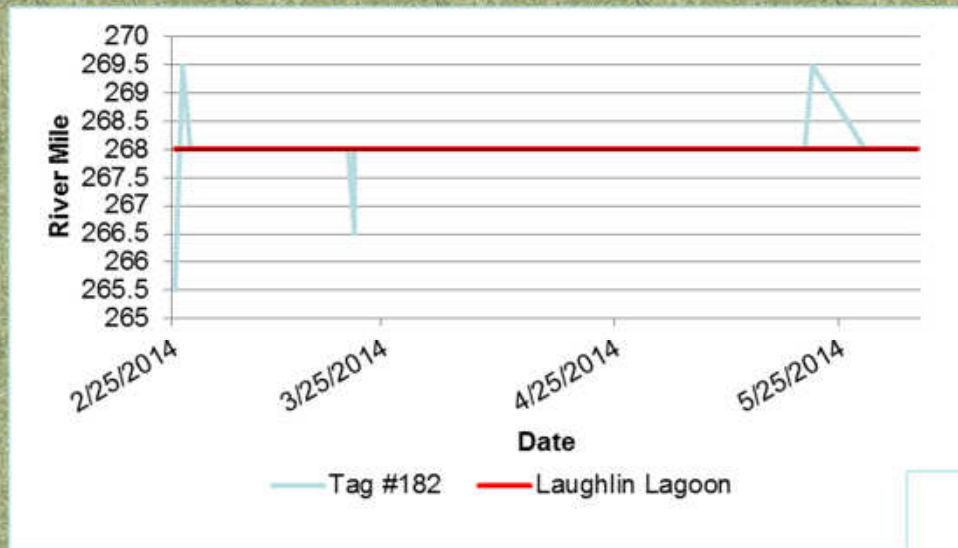
Fish were not associated with emergent veg. in backwaters with higher turbidity



Lower Colorado River Multi-Species Conservation Program



Balancing Resource Use and Conservation



Lower Colorado River Multi-Species Conservation Program



Balancing Resource Use and Conservation

Acknowledgements

- Lake Mead Hatchery
- USBR, Boulder City, NV
- Nevada State Parks
- NPS
- Bio-West



www.lcrmscp.gov