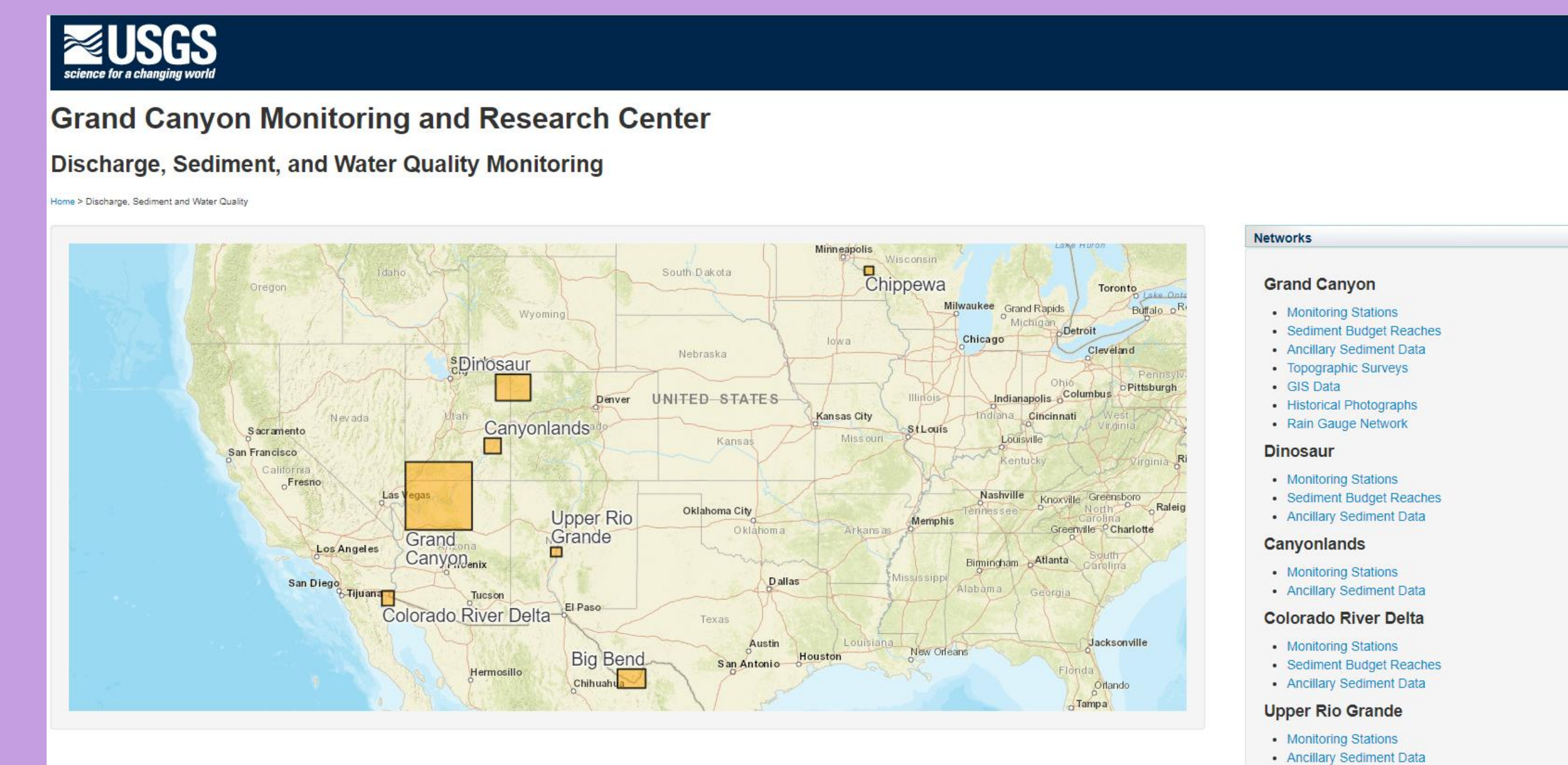
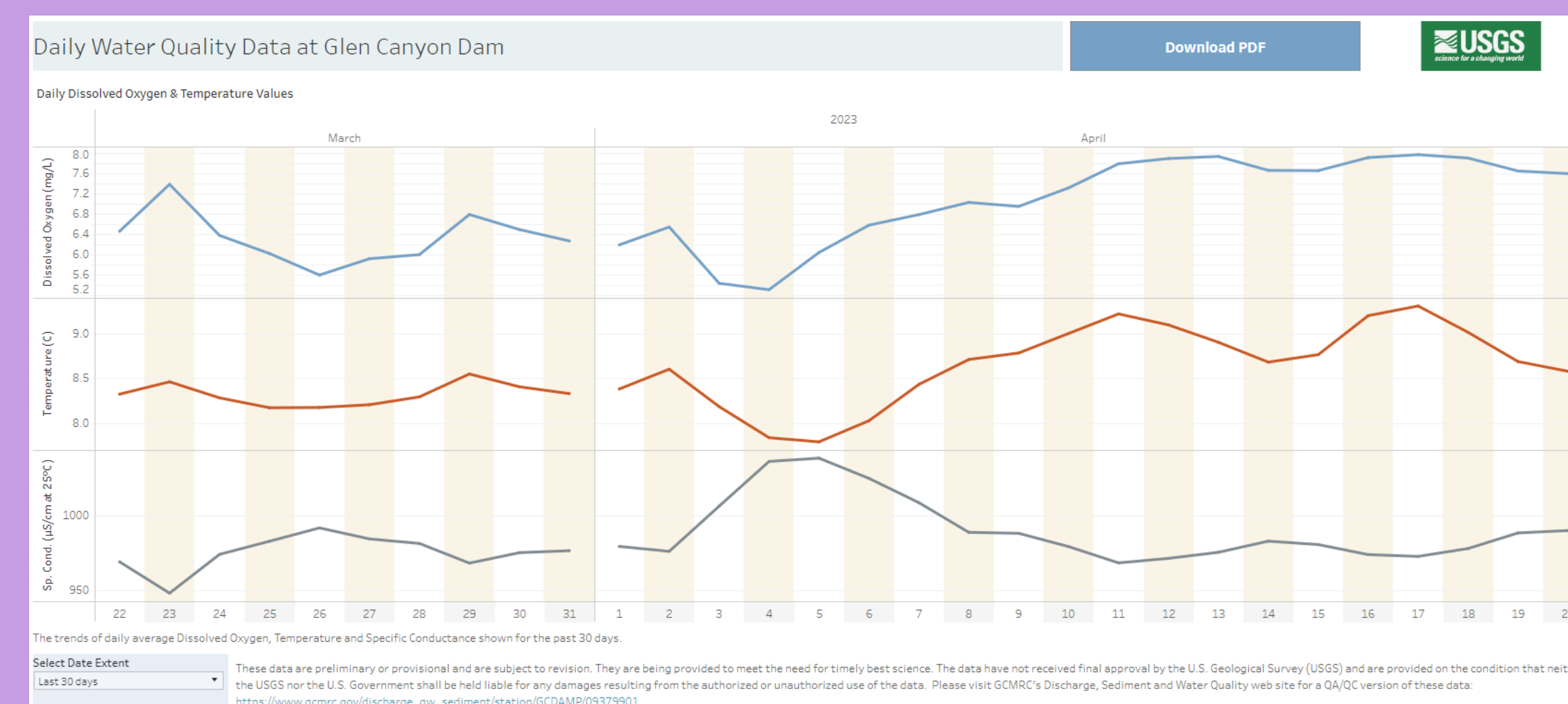


Sensor-to-Cloud Workflows in Remote Areas Require Complex Solutions

Automating Sensor-to-Cloud Workflows for Riparian Resources in Grand Canyon

¹US Geological Survey, Southwest Biological Science Center,
Grand Canyon Monitoring & Research Center, Flagstaff, AZ

Cloud & Web Presentation



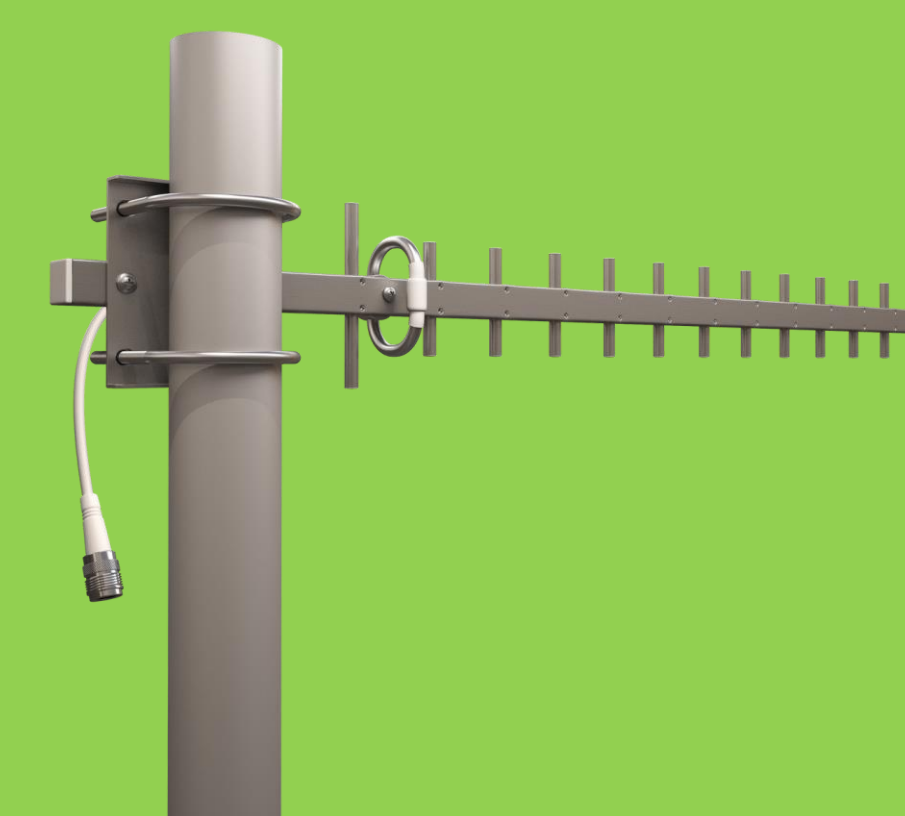
Cloud Access & Processing



Network Protocol



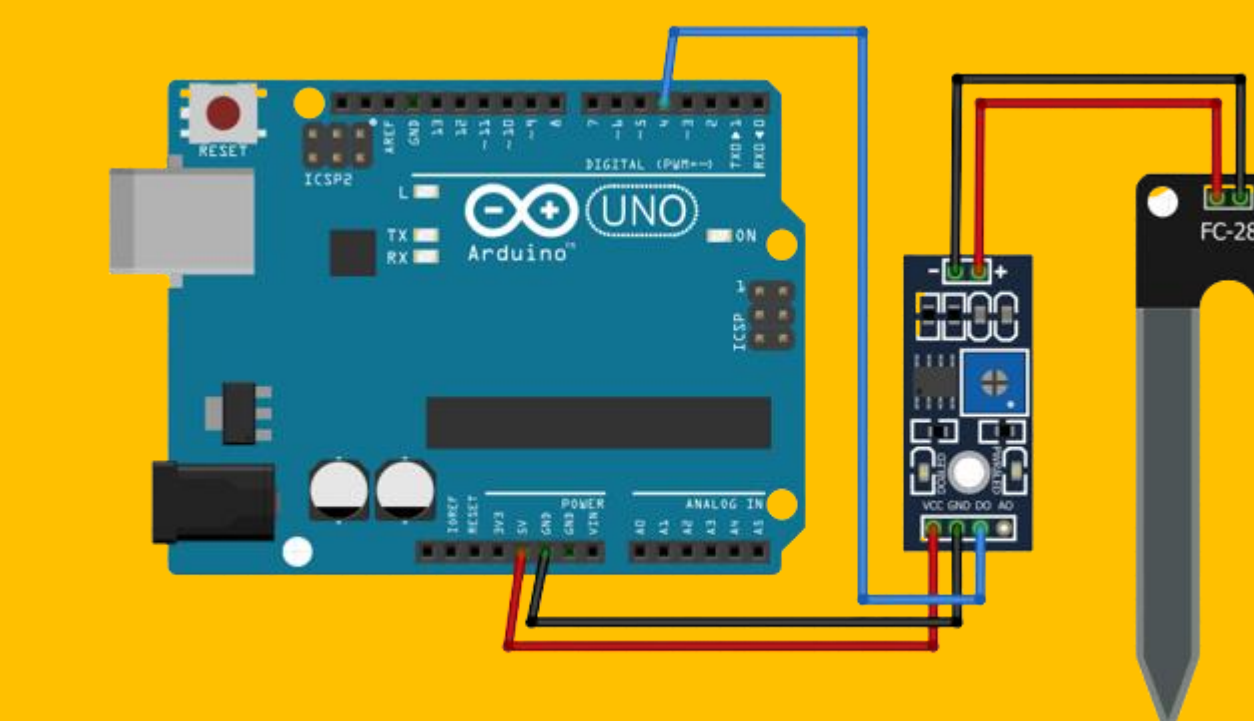
Telemetry



Edge Processing



Sensors



Glen Canyon Dam
& Lees Ferry

30, 61, 87 Mile
Sediment Gaging Sites

Little Colorado River

Taylor Woods
Experimental Forest

