

# WESTERN AT A GLANCE

## ABOUT WESTERN

Western Area Power Administration is a Federal agency under the Department of Energy that markets and transmits wholesale electrical power through an integrated 17,000-plus circuit mile, high-voltage transmission system across a 15-state marketing area. Employees work around the clock to sell power and both operate and maintain the transmission system that provides energy to:

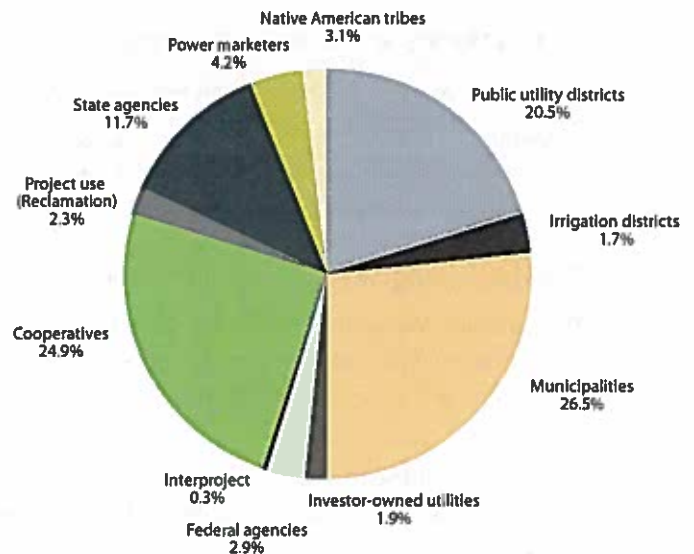
- Cooperatives
- Federal and state agencies
- Municipalities
- Native American tribes
- Public utility and irrigation districts
- Other energy service providers

In turn, our customers provide electric service to millions of people from as far south as Texas to as far north as the Dakotas, and from the lakes of Minnesota to the California coastline.

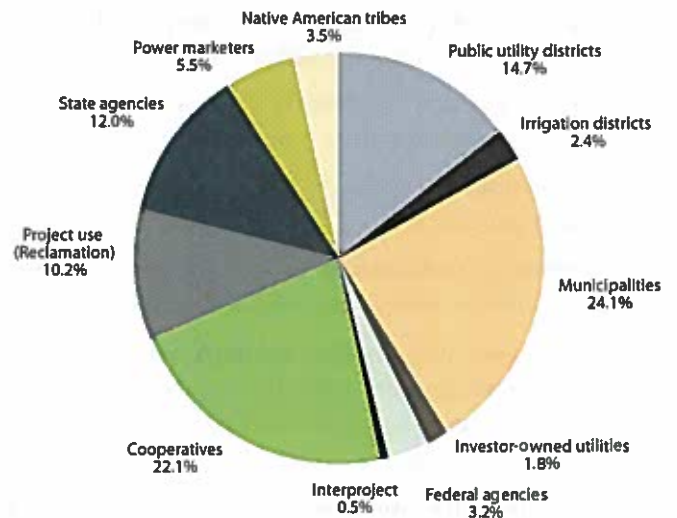
Western's responsibilities include the Transmission Infrastructure Program. TIP develops transmission infrastructure that delivers renewable energy across the grid in the West.

For 35 years, Western employees have been dedicated to public service and the promotion of environmental stewardship, energy efficiency and renewable energy, as well as implementing new technologies to ensure the transmission system continues to be ready and available to meet the needs of those we serve.

## WHERE OUR REVENUES COME FROM (\$)



## WHERE OUR ENERGY GOES (MWh)



## MARKETING PROFILE

FY 2012

Long-term energy sales	33.5 billion kWh
Pass-through energy sales	1.2 billion kWh
Other energy sales	6.2 billion kWh
Total	40.9 billion kWh

## FINANCIAL PROFILE

Sales of electric power	\$925.9 million
Total operating revenues	\$1,294.8 million
Total operating expenses	\$1,008.3 million
Purchased power and transmission expenses	\$278.4 million

## ASSETS

Powerplants <sup>1</sup>	57
Installed capacity (MW)	10,505
Net generation 2012 (GWh)	37,776
Substations	328
Transmission line miles	17,060

## OUR PEOPLE

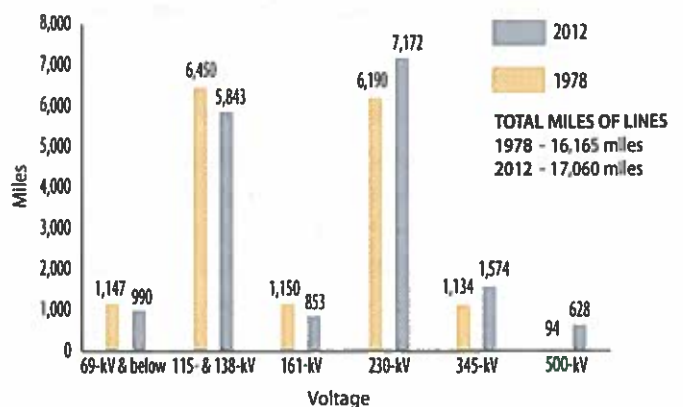
Customers	690
Employees	1,416

## PEAK LOAD

July 9, 2012	6,427 MW
--------------	----------

## TRANSMISSION LINES IN SERVICE

as of Oct. 1, 2012



<sup>1</sup> Includes 56 hydropower and 1 coal-fired powerplants

# FUNCTIONAL RESPONSIBILITIES

## WESTERN'S MISSION AND VISION

**Mission** - Market and deliver clean, renewable, reliable, and cost-based hydroelectric power and related services.

**Vision** - Provide premier power marketing and transmission services to our customers, as well as contribute to enhancing America's energy security and sustaining our nation's economic vitality.

**Power Marketing** - Western primarily markets wholesale federal power.

**Transmission Marketing** - Western is also in the business of transmission marketing. Utilities may purchase available transmission capacity on Western's system after meeting Western's capacity needs to deliver Federal hydropower to its firm power customers. Available transmission capacity is sold on Western's Open Access, Same-Time Information System.

**Transmission Infrastructure Program** - This Western program is responsible for developing transmission and related technology projects to deliver, or facilitate the delivery of, renewable energy. In order to accomplish this, Congress granted Western \$3.25 billion in borrowing authority through the American Recovery and Reinvestment Act of 2009.

**Natural Resources** - The Natural Resources Office is composed of the Environment and Lands teams. The Environment team focuses on environmental planning and compliance, National Environmental Policy Act compliance, cultural resources and endangered species issues, and hazardous material transportation. The Lands team assists in the development, acquisition, and management of land and land rights required for Western's transmission system.

**Facility Design** - Western's Design staff provides transmission system engineering services and expertise with an emphasis on substation, transmission line, and building designs.

**Construction** - Engineers throughout Western are responsible for the construction of new and upgraded transmission lines and related facilities.

**Power System Operations** - Western's Power System Operations staff is responsible for the reliable operations of Western's transmission system and multiple Balancing Authorities.

**Planning** - Western's Planning staff conduct short and long-term planning studies to assess the impacts to power flows on the transmission system in response to upgraded or new facilities that intend to interconnect to Western's grid. They also actively participate in regional planning groups to ensure Western's support and involvement in collaborative future planning.

**Maintenance** - Western's Maintenance staff, which comprises more than one-half of Western's workforce, focuses on reliability and providing superior customer service in keeping the system in good operating condition.

Western works with many regulating entities within the electrical industry to meet industry standards and guidelines. These entities include:

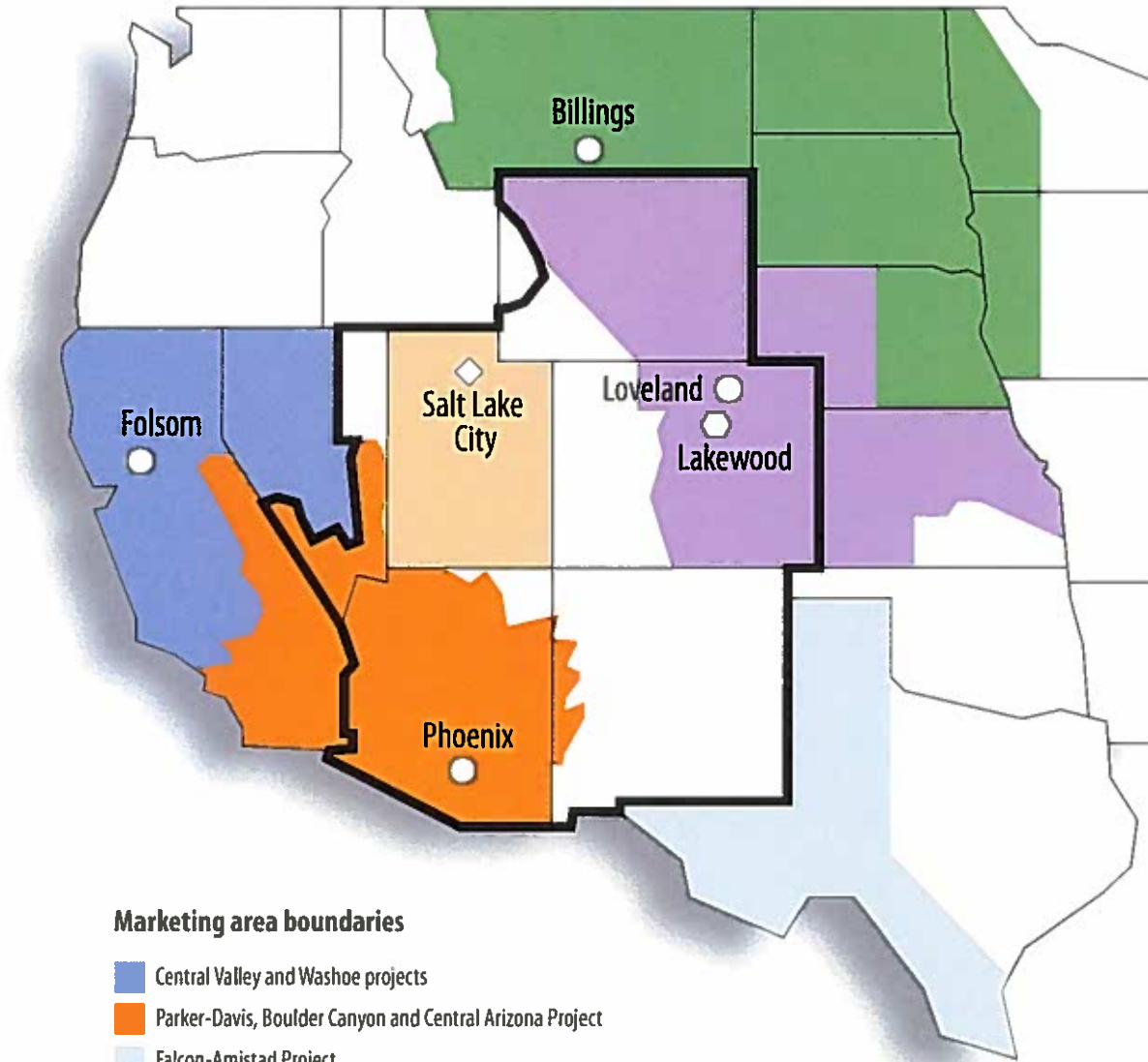
**Federal Energy Regulatory Commission (FERC)** - Although FERC does not have jurisdiction over Western for most purposes, Western is a transmitting utility subject to FERC jurisdiction under section 211 of the Federal Power Act. Additionally, because Western is a major transmission system owner and provides wholesale electricity across the West, it voluntarily chooses to follow many FERC rules and has an Open Access Transmission Tariff on file with FERC.

**North American Reliability Corporation (NERC)** - Western is a member of the Western Electricity Coordinating Council (WECC) and the Midwest Reliability Organization (MRO), two of NERC's eight reliability councils.

As a transmission provider, Western is responsible for the reliable operation and maintenance of its transmission system by complying with all NERC Reliability Standards.



# Project Marketing Areas



### Marketing area boundaries

- Central Valley and Washoe projects
- Parker-Davis, Boulder Canyon and Central Arizona Project
- Falcon-Amistad Project
- Provo River Project
- Loveland Area Projects  
*Pick-Sloan Missouri Basin Program – Western Division and Fryngpan-Arkansas Project*
- Pick Sloan Missouri Basin Program – Eastern Division
- Salt Lake City Area/Integrated Projects  
*Colorado River Storage Project, Collbran, Rio Grande, Seedskadee and Dolores projects*
- State Boundaries
- Regional Office
- Corporate Services Office
- CRSP Management Center